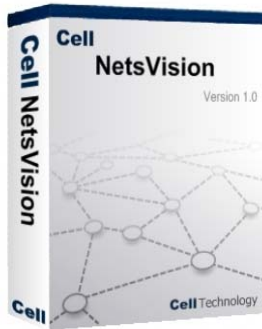


Cell NetsVision

Intelligent Cell Management System (iCMS)



Features

- Complete Centralized Management for Cell Products Portfolio
- Java-Based Server-Client Platform
- 3-tiered Network Architecture Design
- Cell iPlug-in Technology for Integration of SNMP or Syslog Devices
- Support Multi- Asian languages
- Support Multi-Platform Capabilities
- Powerful Logs Monitoring, Analysis, Reporting & Notification
- Powerful Network Services & Performance Monitoring
- Powerful Database Management & External Storage System
- Support System High Availability

Overview

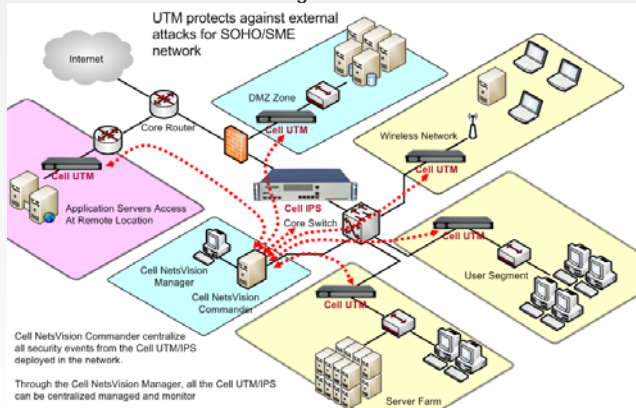
Cell NetsVision, an intelligent Cell Management System (iCMS) is the complete, comprehensive and centralized software management platform to monitor, control and manage for all Cell products including Cell IPS, UTM, CMC, Janus and NetsAccess such as routers, IP switches & other network devices in a highly performance and scalability purpose.

Cell NetsVision is designed with a 3-tier system architecture and with Cell's proprietary of multiple plug-in design (Cell iPlug-in) modules for integrating the 3rd party of network devices by SNMP/or syslog to support the powerful capability of operating, administrating, provisioning, and maintaining all system logs/or events via a feature-rich Graphical User Interface (GUI) operated by a Java-based server and client based software platform under Linux Operation System (OS).

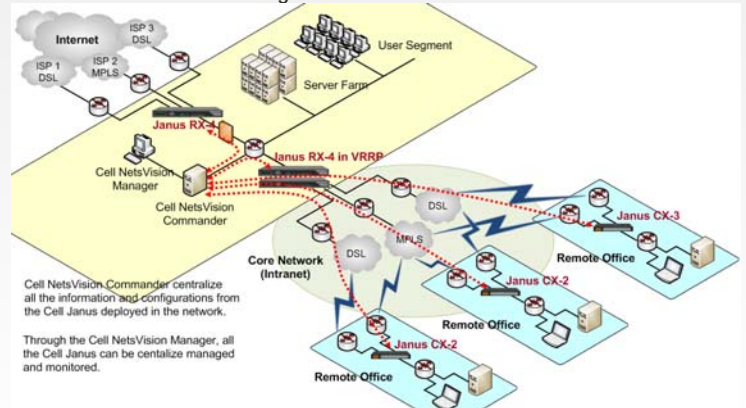
Cell NetsVision can be deployed as a multi-platform to support different Cell product lines, other network devices and integrated with any other NMS systems or external database such as Microsoft SQL, Oracle and etc. It can be used for monitoring the performance and administrating all the network appliances with system logs monitoring, policy configuration, data storage, database management and forensic in layer 7 of network services.

Application

Cell IPS/UTM Centralized Management



Cell Janus Centralized Management



Cell NetsVision, Intelligent Cell Management System (iCMS) Specification

System Architecture

- 3-tier network deployment
- Support multi-iCMS Commanders in a network and managed by a single iCMS Manager
- Support external storage system for data storage or backup
- Support external database

NetsVision, iCMS Commander Requirement

Standard Configuration

- OS : Redhat Linux OS with Fedora Core 5/above
Debian Linux OS with Ubuntu 6.04/above
- Pentium 4 (2.8G) or above with 2GB RAM
- 120G hard disk or above
- FE/GE network interface

High-end Configuration

- OS : Redhat Linux OS with Fedora Core 5/above
Debian Linux OS with Ubuntu 6.04/above
- Pentium Core 2 Duo/Xeon with 4GB RAM
- With SATA 120G hard disk and above, support RAID system and 1+1 hardware redundancy
- GE network interface

NetsVision, iCMS Manager Requirement

- OS : Redhat Linux OS, Windows 2000/XP
- Pentium 4 or above with 512MB RAM
- 160G hard disk or above
- FE/GE network interface

International Language Support

- English, Simple Chinese, Traditional Chinese, Japanese, Korean*

Device Management

- Manage devices inventory
- Visualize network topology

Logs/Alert Management

- Centralize logs/alerts for monitoring view
- Normalize logs/alerts into standard format
- Query logs/alerts based on different criteria
- Support 3-party NMS by SNMP and syslog integration
- Notification: SNMP, Syslog, Email

Dashboard Management

- Real time traffic status monitor and view
- Log/Alert statistic

Database Management

- Scheduled backup and purge database
- Monitor database engine status
- Support external logs storage through ODBC
- Support Oracle, Microsoft SQL Server and MySQL

User Management

- Manage and control user accounts and administration
- Allow multiple users to login simultaneously

Service Management

- Real time service engines status monitor
- Track the processing status of all the schedule tasks

Reporting Generation

- Report by alert type, source IP and destination IP, Traffic Loading
- Scheduled reporting, supporting Email, FTP and local file spooling
- Export to Excel, CSV, PDF, HTML and Text file
- Support web based console
- Support various customized reporting formats and styles

iPlug-in Integration

- With Cell proprietary technology design
- Support all Cell products – Cell IPS, UTM, CMC, Janus, and NetsAccess* for centralized management purpose
- Support 3rd party of network devices* such as router, IP switches and etc

Cell IPS/UTM Centralized Management

- Policies apply to multiple IPS/UTM concurrently
- Full function of standard IPS/UTM console
- Support customized attack signature
- Network and Service is object oriented
- Manual, Automatic or Pre-Schedule for IPS/UTM Signature/KB update
- Support large scalable of Cell IPS/UTM deployment and security service monitoring in MSSP/SOC models

Cell Janus Centralized Management

- Policies apply to multiple Janus concurrently
- Full function of standard Janus console
- Support real time log monitoring, reporting, database, storage and backup operation
- Support large scalable of Cell Janus deployment for enterprise/service provider networks

Cell CMC Centralized Management

- Policies apply to multiple CMC concurrently
- Full function of standard CMC appliance console
- Support real time alert monitoring, logs & alert correlation, real time and incident reporting, database, storage and backup operation
- Support large scalable of Cell CMC deployment and security service monitoring in MSSP/SOC models

Cell NetsAccess* Centralized Management

* in product roadmap

Ordering Information

Cell NetsVision Uni-Platform

Cell IPS Centralized Management System – iCMS-IPS
 Cell UTM Centralized Management System – iCMS-UTM
 Cell Janus Centralized Management System – iCMS-Janus
 Cell CMC Centralized Management System – iCMS-CMC
 Cell NetsAccess* Centralized Management System – iCMS-NAS

Cell NetsVision Multi-Platform

For Cell Multi-Network Devices Deployment
 For OEM/ODM Integration of Third Party of NMS

[Please contact Cell Technology for network deployment design and specific ordering]

About Cell Technology

Cell Technology headquartered at Hong Kong SAR, a network & security technology provider specializes in design, develop and deliver innovative and intelligent IP packet processing platform into software and hardware appliances. Cell product solutions including Cell IPS, UTM, CMC, Janus, TMS, NetsVision and NetsAccess address the business needs that optimize the IP network performance, secure the network security and resiliency, and manage the quality of IP services. For more information, please visit www.cell-technology.net.